



ADDENDUM NUMBER ONE (1)

Issuance Date: August 23, 2019
Project Name: LSU School of Veterinary Medicine - Stephenson Veterinary Hospital
Architect's Job No.: 1136.00-17
State Project No: 19-601-17-03
WBS No. F.19002122

Acknowledge receipt of this Addendum in the space provided in the Bid Form. Failure to do so may subject the bidder to disqualification.

General Contractors are reminded that Bids are due at **2:00 pm, Local Time, Tuesday, September 10th, 2019.** This is not a revision.

The following changes are issued for clarification purposes and shall be incorporated into the contract documents.

GENERAL:

- Any references to specific manufacturer's and models in the drawings are for basis of design purposes only. A complete listing of approved manufacturers can be found in the specifications. Where a basis of design manufacturer is listed, it is only to denote the quality standard of the products desired, and does not restrict Bidders to the specific brand, make, manufacturer or specification named; they are used only to set forth and convey to prospective Bidders the general style, type, character and quality of the products desired; and equivalent products will be acceptable, but only with written prior approval as described in the project specifications.
1. MAPP RFI's – 2019.08.20
 1. Re: Spec Section 10 14 00 – 2/ 2.1A – “Interior Room/Door & Emergency Evacuation Signs. Models and Series numbers listed below are to be references as a basis of quality only. Custom signage design to match the client's sample on file in their office and as shown in the drawings for reference”. No signage information is to be found in the drawings to reference. Please advise.

Page 1 of 6

ARCHITECTURE PLANNING INTERIORS TIPTON-ASSOCIATES.COM
449 Westmoreland Drive Baton Rouge LA 70806 225.387.0101 office 225.387.0104 fax

APAC Kenneth Tipton, Jr. Bryon Hume J. Shane Higdon

RESPONSE – Re: 8/A600 – Signage Elevations.

2. Re: Spec Section 10 14 00 – 5E (L101/2) – Donor Signs and Building Plaques – Please advise if these items are to be OFOI, CFCI or OFCI.

RESPONSE – All project signage to be CFCI.

3. Re: Spec Section 12500 – Window Treatments – No shades (manual or motorized) are shown on plans to be installed at windows. Please advise on schedule/locations of window treatments.

RESPONSE – See legend for dashed lines indicating window shade locations on sheets A630 and A631. Items 1C, 3C, 4C, 9S, 10S, 14S, 15S, 17S, 16S, 18S and 19S shall be motorized. All others shall be manual.

4. Re: Spec Section 21 00 00/3.3A – Fire Suppression: “The Contractor shall visit the building site to determine existing conditions and will be held responsible for allowing for these conditions in his bid. This will include above or below grade items that may affect the work”. It is not possible for the contractor to determine undisclosed below grade conditions. Please advise on all below grade conditions that contractor should be aware of during bidding process (excluding information provided on C100, geotechnical report and survey) as it is not feasible for us to determine these conditions by only visiting the existing site.

RESPONSE –

a. Contractor is advised of the potential for saturated soil on the site, due to Mississippi River Stage.

b. As noted on Sht C100: “The underground utilities shown hereon have been located from Ia. One call (ticket # 180295889), visible utility features, and/or previous construction drawings. The surveyor makes no guarantee that the underground utilities shown comprise all such utilities in the area, either in service or abandoned. The surveyor further does not warrant that the underground utilities shown are in the exact location indicated. The surveyor has not physically located the underground utilities, except for above ground visible utility features. This drawing is based on a survey of property made by David L. Patterson, P.L.S. of Landsource, Inc. Quality Engineering & Surveying, LLC. Offers no warranty and makes no representation regarding the accuracy of completeness of the survey.”

6. Re: A110; A120; A610 – Please advise if a floor finish should be installed at North & South Stairs (S10101; S10102; S20201; S20202).

RESPONSE – PF-1 to be installed in rooms listed.

7. Re: E002 & E003 does not appear to indicate any power to the access gates and card readers shown on C200. Please advise.

RESPONSE – Revised Sht C500 to include underground electric branch from pump station service line to card reader at entrance island - to be coordinated with Electrical Plans.

8. Re: TV Brackets – Please advise if brackets needed for installation of TVs are to be OFOI, CFCI or OFCI.

RESPONSE – TV's and related bracketing to be OFOI. Contractor to provide wall blocking support in locations indicated to receive those items.

9. Re: C300 – Please advise if all storm drainage piping can be RCP or if the PVC piping shown on plans is mandatory.

RESPONSE – RCP culverts may be substituted for PVC storm drain pipe called for in plans, where feasible.

2. Cangelosi Ward RFI's – 2019.08.21

- Is there base scheduled in the stairwells

RESPONSE – RB to be installed in stairwells.

- What is the floor finish in the elevator?

RESPONSE – Fluid-Applied Flooring, PF-1. See specification revision below.

- There has been several questions asking where the manual vs the motorized shades go?

RESPONSE – See previous RFI response above.

- What brick is MAS.05 on detail 5 A200

RESPONSE – Revise MAS.05 on detail 5/A200 to read MAS-01. MAS-01 is facing brick per Section 04 20 01.

- There is a spec for fiberglass doors, but none shown on the door schedule or door types sheet A621

RESPONSE – There are no fiberglass doors on sheet A621 – Interior Door Schedule(s). Re: A630 – Exterior Opening Schedules and Elevations for doors labeled “FRP” in the schedule.

- Is this project Tax Exempt?

RESPONSE – No.

PRIOR APPROVALS:

The following manufacturers and/or products are approved for the items listed, subject to compliance with the drawings and specifications.

1. Architectural:

- **Section 07 21 19 – Foamed-In-Place Insulation:** Spraytite 178 Series Building Envelope Insulation, as manufactured by BASF Corporation.
- **Section 07 95 13 – Expansion Joint Covers:** 9W-1 and 9WC-1; Wall and Roof Expansion Joint Covers, as manufactured by Balco, A CSW Industrials Company.
- **Section 08 42 13 – Aluminum-Framed Entrances:** 50M/50D, Wide Stile Monumental Entrance Systems, as manufactured by YKK AP.
- **Section 08 43 13 – Aluminum-Framed Storefronts:** YES40FS, Non-Thermally Broken, Outside Glazed Storefront System, as manufactured by YKK AP.
- **Section 08 43 13 – Aluminum-Framed Storefronts:** YES45TU, Thermally Broken, Outside Glazed Storefront System, as manufactured by YKK AP.
- **Section 08 44 13 – Aluminum-Framed Curtainwall:** YCW 750 OG, Thermally Broken, Outside Glazed Curtainwall System, as manufactured by YKK AP.

SPECIFICATIONS:

- **Section 07 21 19 – Foamed-In-Place Insulation:** Part 2-Products, Paragraph 2.1 - Manufacturers, revise Subparagraph A. to read as follows:
 - 2. Icynene-Lapolla; Icynene Proseal CW (MD-C-200v3); www.icynene.com/#sle.
- **Section 09 67 13 – Elastomeric Liquid Flooring:** Part 2-Products, Paragraph 2.3 - Accessories, omit Subparagraph B.:
 - B. Base Caps: Zinc with projecting base of 1/8 inch; color as selected.
- **Section 14 24 00 – Hydraulic Elevators:**
 - Part 2-Products Paragraph 2.8 – revise Subparagraph G. to read as follows:
 - G. Fluid-Applied Flooring: PF-01 As specified in Section 09 67 00.
 - Part 2-Products Paragraph 2.10 – revise Subparagraph A. to read as follows:
 - 3. Flooring: Fluid-applied flooring.

- **Section 03 30 00 – Cast-In-Place Concrete:** Part 2-Products, Paragraph 2.8 – Curing Materials, revise Subparagraph B. to read as follows:
 - B. Curing compounds must be approved for use as a complete single-source manufacturer, warrantable system as specified in Section 03 35 43 – Polished Concrete Finishing where scheduled. RE: A610, Items designated PC and SC. Curing compound shall not interfere with bonding of floor covering. The following list of compounds does not indicate acceptance with the floor finishes utilized. Contractor shall only submit for approval curing compounds that are guaranteed not to interfere with bonding of any floor covering. Contractor assumes all responsibility for compliance of curing compounds with respect to this requirement.

DRAWINGS:

- **Sheet S410 – Framing Details:** Keynotes 22, 23, and 24 have been revised.
- **Sheet C500 – Utility Layout:** Electrical service to card reader at vehicular gates revised.

End of Addendum No. One (01)

Attachments:

Addendum No. 1, BDA Architecture, July 23, 2019
Addendum Number One (01), AST Engineers, July 21st, 2019
A112 – FF&E Plan – First Floor
A610 – Finish Schedule
S410 – Framing Details
C500 – Utility Layout
Section 11 94 00 – Veterinary Equipment

ADDENDUM NO. 1 – July 23, 2019

Addendum Contents and RFI's:

This document – 1 page

Technical Specifications:

Revised: **Section – 119400 – Veterinary Equipment – 7 pages total**

1. 2.19 Dental X-Ray – Added
2. 2.20 Stainless Steel Bathing Tub – Added
3. 2.21 Trench Drains - Added

Drawings:

Revised: **2 sheets total**

1. A112 FF&E Plan – First Floor_082119_Rev1 – Sheet Reissued.
 - a. Reference Keynote 02 25 57.01 added to read "Existing Treadmill – Verify with Owner"
 - b. Reference Keynote 11 79 13.05 added to read "Underwater Treadmill CFCI"
 - c. Text note added to read "Interconnecting piping to be provided by treadmill equipment"
2. A610_082319_Rev 1 – Sheet Reissued.
 - a. Room Finish Legend – PF-Poured Floor, PF-2 Flaked Poured Floor added
 - b. Room Finish Schedule – Locations of PF-2 added to schedule
 - c. Added Spot elevation on Vinyl Wainscot elevation

RFI Responses:

MAPP RFIs– 08/23/19

- 1) Please advise the applicable material for Floor Finish Material Labeled PF. Mentioned abbreviation cannot be found in room finish schedule. RFI#1
Response – PF-Poured Floor. See reissued A610 with updated legend
- 2) Re: Spec Section 11 94 00 – 3/2.03- Veterinary Equipment: The spec provides manufacture information for Underwater Treadmills shown in room #10140. These treadmills are not included in the FF&E Keynotes. Please specify the responsible party for these items. RFI#5
Response – One treadmill will be repurposed from existing hospital. Second treadmill is CFCI. See reissued A112 with new keynotes.

3D Construction RFIs– 08/23/19

- 1) Substitution Request for Acrovyn Vinyl Sheet
Response - Substitution approved – Make submittals in accordance with Specification Section 01330
- 2) Substitution Request for Corner Guard
Response - Substitution approved – Make submittals in accordance with Specification Section 01330

J.W. Grand, Inc. – 08/23/19

- 1) The Finish Schedule on drawing A610 calls out "PF". The Legend does not include a description

for "PF."

Response – PF-Poured Floor. See reissued A610 with updated legend

- 2) The Finish Schedule on drawing A610 calls out "RGF". Would you please provide a specification?

Response – Refer to Specification Section 09 67 13

Cangelosi Ward – 08/23/19

- 1) On the walls getting rigid vinyl wainscot, is this going to be held off the floor 4 inches for the base or is it going all the way to the floor?

Response – All the way to the floor. See A10/A610 elevation.

- 2) What floor finishes goes in room 10141?

Response – Rubber gym floor. See Specification Section 09 67 13

- 3) I am needing some clarification for the resinous flooring spec'd in this project. First, there are 3 different Res Flooring products spec'd, but no indication on finish schedule as to which epoxy floor goes where. Secondly, the finish schedule calls for "PF" but the legend doesn't have PF listed.

Response – PF-Poured Floor. PF-2 Flaked Poured Floor. RGF Rubber Gym Floor. See reissued A610 with updated legend and room finish schedule.

Scranton Products – 08/23/19

- 1) Substitution Request for Hiny Hider

Response - Substitution approved – Make submittals in accordance with Specification Substitution Procedures.

END OF ADDENDUM NO. 1

Stephenson Veterinary Hospital
Louisiana State University
Baton Rouge, Louisiana
WBS: F.19002122
Project No.: 19-601-17-03
Part No.: N/A



AST ENGINEERS

Addendum Number One (01)
August 22, 2019

Make the following additions, deletions, alterations, clarifications, or corrections to the Drawings and Specifications. This Addendum becomes a part of the Contract Documents when the Construction Contract is executed.

MECHANICAL ITEMS

SPECIFICATIONS

1. Section 21 00 00 – Fire Suppression General Requirements:
 - A. Paragraph 3.3.A:
 - (1) Delete the second sentence.

2. Section 22 00 20 – Plumbing Piping Systems:
 - A. Paragraph 1.1.F, replace with the following:

"F. All building services piping defined by ASME B31.9 (including, but not limited to gas piping) shall comply with the current edition of ASME B31.9 "Building Services Piping" for materials, products, fabrication, and installation of piping systems."
 - B. Paragraph 3.1.F, Delete paragraph 10 add replace with the following:
 - "10. Per LSU requirements, twenty percent of prefabricated welds and one hundred percent of field welds on all pressure piping defined by ASME B31.3 (including, but not limited to piping containing category D, category M, high pressure, and normal fluid services) shall be examined visually and radiographically.
 11. All welds on building services piping shall be examined as per ASME B31.3 for process piping (including, but not limited to piping containing category D, category M, high pressure, and normal fluid services) and shall comply with the acceptance criteria defined in Table 341.3.2, for Normal Fluid Service in the current edition of ASME B31.3 "Process Piping" for inspection, examination, and testing of process piping."

3. Section 23 00 30 – HVAC Piping Systems:
 - A. Paragraph 3.1.E, Delete paragraph 10 add replace with the following:
 - "10. Per LSU requirements, twenty percent of prefabricated welds and one hundred percent of field welds on all pressure piping defined by ASME B31.3 (including, but

Stephenson Veterinary Hospital
Louisiana State University
Baton Rouge, Louisiana
WBS: F.19002122
Project No.: 19-601-17-03
Part No.: N/A



AST ENGINEERS

Addendum Number One (01)
August 22, 2019

not limited to piping containing category D, category M, high pressure, and normal fluid services) shall be examined visually and radiographically.

11. All welds on building services piping shall be examined as per ASME B31.3 for process piping (including, but not limited to piping containing category D, category M, high pressure, and normal fluid services) and shall comply with the acceptance criteria defined in Table 341.3.2, for Normal Fluid Service in the current edition of ASME B31.3 "Process Piping" for inspection, examination, and testing of process piping."

4. Section 23 00 40 – HVAC Piping Materials:

- A. Paragraph 2.1.B, add the following:

"B. In lieu of welding steel piping, Contractor may use grooved type couplings and fittings as manufactured by Victaulic. Grooves in the pipe must be rolled using the proper equipment and in accordance with the manufacturer's specifications. Further requirements in paragraph 2.5."

- B. Paragraph 2.5 add the following:

"E. Grooved Fittings: Were allowed for steel piping systems, grooves created in pipes must be rolled. Methods of producing grooves that remove material from the pipe, fittings, couplings or valves are prohibited. Couplings and fittings must be of American manufacture, by Victaulic."

- C. Paragraph 2.11, add the following:

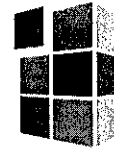
(2) "Separator shall have flange/bolted removable cover."

- B. Part 3 – Execution, add the following:

"3.2 GROOVED PIPING SYSTEM INSPECTION

- A. For steel piping systems utilizing grooved type couplings and fittings, the manufacturer's factory-trained representative (a direct employee of the grooved piping system manufacturer) shall periodically visit the job site and review the installation for best practices. The Installing Contractor shall correct any identified deficiencies.
- B. Installed product that has been examined and has not met the inspection criteria for proper installation, must be corrected and re-examined by Inspection Services prior to the completion of the project. Any product that has not been corrected or was not examined will not be considered as part

Stephenson Veterinary Hospital
Louisiana State University
Baton Rouge, Louisiana
WBS: F.19002122
Project No.: 19-601-17-03
Part No.: N/A



AST ENGINEERS

Addendum Number One (01)
August 22, 2019

of the successful completion of the Inspection program and would be noted accordingly.

- C. The Installing Contractor must provide access to all couplings and fittings and coordinate with the manufacturer prior to installation of insulation. Any joints not accessible for inspection shall be noted.
- D. Upon completion of the required inspections and confirmation that any and all deficiencies have been corrected, the manufacturer shall provide a report to the Engineer and Installing Contractor indicating that joint installations are in compliance with the manufacturer's requirements."

MECHANICAL PRIOR APPROVALS – APPROVED

ITEM	MANUFACTURER	EQUIPMENT TYPE/MODEL
Coalescing Air Eliminating Separator	Taco	4900ADR Series
Domestic Automatic Flow Regulating Valves	Nexus	UNML
Domestic Water Circulator	Taco	00 Series
Domestic Water Thermal Expansion Tank	Wheatley	BDT
HVAC Automatic Flow Regulatory Valve	Nexus	UM
HVAC End Suction Pumps	Patterson	ES Series
Motor Starters	Taco	TSS Series
Suction Diffuser	Taco/Patterson	SD Series

**SECTION 119400
VETERINARY EQUIPMENT**

PART 1 – GENERAL

1.01 RELATED DOCUMENTS

- A. Drawings and general provisions of the Contract, including General and Supplementary Conditions and other Division 01 Specification Sections, apply to this Section.

1.02 SUMMARY

- A. This Section includes the following:

- 1. Veterinary Equipment

1.03 SUBMITTALS

- A. Furnish copies of manufacturer's literature indicating the components of the specified materials, installation specifications and maintenance requirements for the materials specified.
- B. Shop Drawings and Schedules: Provide mounting details and schedules for all Equipment.

1.04 QUALITY ASSURANCE

- A. Comply with governing codes and regulations. Provide products of acceptable manufacturers which have been in satisfactory use in similar service for three years. Use experienced installers. Deliver, handle, and store materials in accordance with manufacturer's instructions.

1.04 WARRANTY

- A. Manufacturer's Warranty: Submit, for Owner's acceptance, manufacturer's standard warranty document executed by authorized company official. Manufacturer's warranty is in addition to, and not a limitation of, other rights Owner may have under Contract Documents. Manufacturer's standard warranty: One calendar year from date of delivery to Project.

PART 2 - PRODUCTS

2.01 Exam Table

- A. 20"x45" Wall Mounted Stainless Steel Folding Exam Table
- B. Manufacturer: TriStar Metals Inc. 54 S Allen Ave. Boyd, Texas 76023. 1-877-459-7827.
Model: 400-23
Finish: Stainless Steel.
- C. Fold-up wall mount Exam Table
Manufacturer: Shor-line, 511 Osage Avenue, Kansas City KS 66105
Model: 902.1130.04
Finish: Stainless Steel.

2.02 Surgery Table

A. Electric Surgery Table V-top

B. Manufacturer: TriStar Metals Inc. 54 S Allen Ave. Boyd, Texas 76023. 1-877-459-7827.

Model: D600-00

Finish: Stainless Steel.

C. Flat top Hydraulic Lift Surgery Table

Manufacturer: Shor-line, 511 Osage Avenue, Kansas City KS 66105

Model: 903.4001.00

Finish: Stainless Steel.

2.03 Exam Lift Table

A. Electric Wall Mounted Folding Lift Table (custom)

B. Manufacturer: TriStar Metals Inc. 54 S Allen Ave. Boyd, Texas 76023. 1-877-459-7827.

Model: custom

Finish: Stainless Steel.

C. Electric Floor mounted Lift Table

Manufacturer: Shor-line, 511 Osage Avenue, Kansas City KS 66105

Model: 916.1140.02

Finish: Stainless Steel.

2.04 Mobile Lift Table (Gurney)

A. 24x50 Mobile Electric Scissor Lift Gurney

B. Manufacturer: TriStar Metals Inc. 54 S Allen Ave. Boyd, Texas 76023. 1-877-459-7827.

Model: D500-50

Finish: Stainless Steel.

C. Mobile Animal Lift Table

Manufacturer: Shor-line, 511 Osage Avenue, Kansas City KS 66105

Model: 903.3120.00

Finish: Stainless Steel.

2.05 Treatment Tub Table

A. 60.5" Stainless Steel Wet Prep Cabinet w/SS grate, 1 door, 3 drawers, sloping top and right hand knee Space. Deck mount (8" Center) faucet with 8" gooseneck, 96" stainless steel sprayer, basket drain w/ Coupling nut, gasket and sealing washer

Manufacturer: TriStar Metals Inc. 54 S Allen Ave. Boyd, Texas 76023. 1-877-459-7827.

Model: 100-10

Finish: Stainless Steel.

B. Stainless Steel Tub Table w/ grill top. Stainless steel base and 1-door, 3 drawer base. Deck mounted Mixing faucet stainless steel hose and spray (804.0006.71). sink drain assembly (804.0008.25)

Manufacturer: Shor-line, 511 Osage Avenue, Kansas City KS 66105

Model: 904.5000.00

Finish: Stainless Steel.

2.06 Bathing Tub

A. 59" Stainless Steel bathing station w/slide-n-hide ramp system; ramp on left, plumbing on right with Small animal grate; wall mount (4"center) spray with vacuum breaker and 72" stainless steel flex hose. Basket drain with coupling nut, gasket and sealing washer, catch-all hair trap
Manufacturer: TriStar Metals Inc. 54 S Allen Ave. Boyd, Texas 76023. 1-877-459-7827.
Model: 800-00
Finish: Stainless Steel.
Options: HDPE Floor Grate for 800-00 Bathing Tub, 48"Lx24"Wx2"H. Quart Shampoo rack back and side mounts

B. Elite Bathing Tub w/ 3sided backsplash, door, raised floors; wall mounted mix faucet w/ coil hose and Aluminum sprayer (804.0006.71); sink drain assembly (804.0008.25)
Manufacturer: Shor-line, 511 Osage Avenue, Kansas City KS 66105
Model: 904.0702.4
Finish: Stainless Steel.

2.07 Treatment Lights

A. Model # 061325
Manufacturer: Medical Illumination International. 547 Liberty St. San Fernando CA. 91340.
1-800-831-1222.
Mounting: Dual Ceiling.

B. Model # 9856 DRE Vision LED
Manufacturer: DRE Veterinary 1800 Williamson Ct. Louisville, Kentucky 40223 USA 800-923-8413 •
502-244-6345 • FAX: 502-244-0369
Mounting: Dual Ceiling.

C. Model # 061324
Manufacturer: Medical Illumination International. 547 Liberty St. San Fernando CA. 91340.
1-800-831-1222.
Mounting: Single Ceiling

D. Model # 9830 DRE Vision LED
Manufacturer: DRE Veterinary 1800 Williamson Ct. Louisville, Kentucky 40223 USA 800-923-8413 •
502-244-6345 • FAX: 502-244-0369
Mounting: Single Ceiling.

2.08 Scale

A. 42"x22" Floor Scale with stainless steel top, 500lb capacity
Manufacturer: TriStar Metals Inc. 54 S Allen Ave. Boyd, Texas 76023. 1-877-459-7827.
Model: 1500-00
Finish: Stainless Steel.

B. Floor scale w/ wall mount and Bluetooth display
Manufacturer: Shor-line, 511 Osage Avenue, Kansas City KS 66105
Model: 905.5010.45
Finish: Stainless Steel.

2.09 Underwater Treadmill

A. Canine Hydrotherapy Treadmill
Manufacturer: Hydrophysio Cockshutt Lane, Broseley, Telford, Shropshire, TF12 5JA, England
t: +44 (0) 1952 885112 f: +44 (0) 1952 885183 e: lifestyle@hydrophysio.com

B. Oasis Hydrotherapy Canine Treadmill
Manufacturer: H2O Fitness, 1237 East Wallace St, Fort Wayne, IN 46803. Tel: 877-296-0816 email:
info@h2oforfitness.com

2.10 Stainless Steel Animal Holding Cages

A. Stainless Steel Cages

Manufacturer: TriStar Metals Inc. 54 S Allen Ave. Boyd, Texas 76023. 1-877-459-7827.

Sizes – Individual units.

24" W x 30" H.

30" W x 30" H.

36" W x 30" H.

48" W x 30" H. With starlite divider partition.

Construction: Type 304 heavy gauge stainless steel.

B. Stainless Steel Cages

Manufacturer: Shor-line, 511 Osage Ave. Kansas City, Kansas 66105. 1-800-444-1579

Sizes – Individual units.

24" W x 30" H.

30" W x 30" H.

36" W x 30" H.

48" W x 30" H. With removable divider partition.

Construction: Type 304 heavy gauge stainless steel.

2.11 Glass Kennel Door.

A. Tempered glass kennel door in 1.1/4" stainless steel tube frame w/ tempered glass side partition,
47.5"x75.5" overall. Positive lock latch, in-and-out swing and no bottom rail on frame

Manufacturer: TriStar Metals Inc. 54 S Allen Ave. Boyd, Texas 76023. 1-877-459-7827.

Model – D1048-GD

Size: per architecture drawings

Quantity: per architecture drawings

B. Glass Gate and Panel

Manufacturer: Shor-line, 511 Osage Avenue, Kansas City KS 66105

Model: custom

Size: per architecture drawings

Quantity: per architecture drawings

2.12 Glass Kennel Side Panel.

A. Direct Starlite side panel (D1036-SLSP), Solid Starlite side panel (D1060-SLSP)

Manufacturer: TriStar Metals Inc. 54 S Allen Ave. Boyd, Texas 76023. 1-877-459-7827.

Model – D1048-GD

Size: per architecture drawings

Quantity: per architecture drawings

B. Full Glass Side Panel

Manufacturer: Shor-line, 511 Osage Avenue, Kansas City KS 66105

Model: custom

Size: per architecture drawings

Quantity: per architecture drawings

2.13 Stainless Steel Cages

A. Titan Series: 18 Ga Stainless Steel Cage

Manufacturer: TriStar Metals Inc. 54 S Allen Ave. Boyd, Texas 76023. 1-877-459-7827.

Model – D1048-GD

Size: per architecture drawings

Configuration: per architecture drawings
Quantity: per architecture drawings

B. Stainless Steel Caging

Manufacturer: Shor-line, 511 Osage Avenue, Kansas City KS 66105

Model: custom

Size: per architecture drawings

Configuration: per architecture drawings

Quantity: per architecture drawings

2.14 Stainless Steel Kennel Door/Gate.

Titan Series: 18 Ga Stainless Steel Door

Manufacturer: TriStar Metals Inc. 54 S Allen Ave. Boyd, Texas 76023. 1-877-459-7827.

Model – D1072

Size: per architecture drawings

Configuration: per architecture drawings

Quantity: per architecture drawings

Stainless Steel Cage Door/Gate

Manufacturer: Shor-line, 511 Osage Avenue, Kansas City KS 66105

Model: custom

Size: per architecture drawings

Configuration: per architecture drawings

Quantity: per architecture drawings

2.15 Stainless Steel Kennel Side Panel

Stainless steel side panel, solid isolation partition, double walled, foam filled

Manufacturer: TriStar Metals Inc. 54 S Allen Ave. Boyd, Texas 76023. 1-877-459-7827.

Model – D1048-GD

Size: per architecture drawings

Configuration: per architecture drawings

Quantity: per architecture drawings

Stainless Steel side panel

Manufacturer: Shor-line, 511 Osage Avenue, Kansas City KS 66105

Model: custom

Size: per architecture drawings

Configuration: per architecture drawings

Quantity: per architecture drawings

2.16 Stainless Steel Kennel Divider Panel

Stainless steel divider panel

Manufacturer: TriStar Metals Inc. 54 S Allen Ave. Boyd, Texas 76023. 1-877-459-7827.

Model – D1048-GD

Size: per architecture drawings

Configuration: per architecture drawings

Quantity: per architecture drawings

Stainless Steel divider panel

Manufacturer: Shor-line, 511 Osage Avenue, Kansas City KS 66105

Model: custom

Size: per architecture drawings

Configuration: per architecture drawings

Quantity: per architecture drawings

2.17 Cat Kennels

left hand unit, center unit, right hand unit. Double stack stainless steel cat condo with side-to-side and up-and-down pass thru portal, urine retaining edges, stainless steel doors, and tempered glass back on casters.

Manufacturer: TriStar Metals Inc. 54 S Allen Ave. Boyd, Texas 76023. 1-877-459-7827.

Model: 1200-21, 1200-24, 1200-27

Finish: Stainless Steel.

Size: per architecture drawings

Configuration: per architecture drawings

Stainless Steel Kennel

Manufacturer: Shor-line, 511 Osage Avenue, Kansas City KS 66105

Model: N/A

Finish: Stainless Steel.

Size: per architecture drawings

Configuration: per architecture drawings

2.18 Dental Air Compressor

Dental Air compressor

Manufacturer: Midmark Suite 110. 10010 N. Dale Mabry Hwy. Tampa, FL 33618. 1-866-447-4276

Model: Powerair Oil less Air Compressor

Coordinate Model / power configuration with existing electrical supply

Manufacturer: Dentalaire 17742 Mitchell North, STE B. Irvine, CA 92614. 1-714-540-9969.

Model: Dual User Silent Compressor

Coordinate Model / power configuration with existing electrical supply

2.19 Dental X-Ray

Wall mounted x-ray

Manufacturer: Midmark Suite 110. 10010 N. Dale Mabry Hwy. Tampa, FL 33618. 1-866-447-4276

Model: VetPro DC

Manufacturer: Dentalaire

Model: Corix Pro 70 Digital

2.20 Stainless Steel Bathing Tub

SST. Bathing Tub with full side splashes and two elevated grates

Manufacturer: TriStar Metals Inc. 54 S Allen Ave. Boyd, Texas 76023. 1-877-459-7827.

Model: 800-17

Manufacturer: Shor-line, 511 Osage Avenue, Kansas City KS 66105

Model: Classic Grooming Tub 904.0702.35

2.21 Trench Drain

16-gauge Stainless Steel Seamless Trench Drain with Built-In 1/8" slope per foot. Welded in 3" Threaded Pipe drain waste outlet, includes HDPE Trench Gates

Manufacturer: TriStar Metals Inc. 54 S Allen Ave. Boyd, Texas 76023. 1-877-459-7827.

Model: 1000-TR

Size: Per Architecture Drawings

Manufacturer: Infinity Drain 145 Dixon Ave. Amityville, NY 11701. 516-767-6786

Model: Custom seamless trench drain

Size: Per Architecture Drawings

PART 3 – EXECUTION

SURFACE CONDITIONS

Prior to all Work of this Section, Contractor shall carefully inspect the installed work of all other trades and verify that all such work is complete to the point where this installation may properly commence. Commencement of work shall indicate acceptance of substrate by Contractor and all errors which may occur from acceptance of substrate shall be repaired or replaced at Contractor's expense.

INSTALLATION

Install materials and systems in accordance with manufacturer's instructions and approved submittals. Install materials and systems in proper relation with adjacent construction and with uniform appearance. Coordinate with work of other sections.

Clean and protect work and equipment from damage.

INSECTION AND ACCEPTANCE

Upon completion of the installation, contractor shall inspect the installations and verify that the Work is complete, properly installed and acceptable. All work found not acceptable shall be removed, replaced and reinstalled at Contractor's expense to the satisfaction and acceptance of Architect.

END OF SECTION

ROOM FINISH SCHEDULE 1ST FLOOR

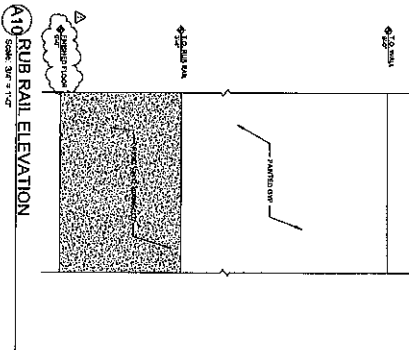
RM. NO.	NAME	FLOOR FINISH MATERIAL	BASE				WALL			CEILING	REMARKS
			NORTH	EAST	SOUTH	WEST	NORTH	EAST	SOUTH		
101	RECEPTION	101	101	101	101	101	101	101	101	101	
102	OFFICE	102	102	102	102	102	102	102	102	102	
103	CONFERENCE	103	103	103	103	103	103	103	103	103	
104	LABORATORY	104	104	104	104	104	104	104	104	104	
105	OPERATING ROOM	105	105	105	105	105	105	105	105	105	
106	ICU	106	106	106	106	106	106	106	106	106	
107	WARD	107	107	107	107	107	107	107	107	107	
108	PHARMACY	108	108	108	108	108	108	108	108	108	
109	RADIOLOGY	109	109	109	109	109	109	109	109	109	
110	STORAGE	110	110	110	110	110	110	110	110	110	
111	RESTROOM	111	111	111	111	111	111	111	111	111	
112	STAFF	112	112	112	112	112	112	112	112	112	
113	RECEPTION	113	113	113	113	113	113	113	113	113	
114	OFFICE	114	114	114	114	114	114	114	114	114	
115	CONFERENCE	115	115	115	115	115	115	115	115	115	
116	LABORATORY	116	116	116	116	116	116	116	116	116	
117	OPERATING ROOM	117	117	117	117	117	117	117	117	117	
118	ICU	118	118	118	118	118	118	118	118	118	
119	WARD	119	119	119	119	119	119	119	119	119	
120	PHARMACY	120	120	120	120	120	120	120	120	120	
121	RADIOLOGY	121	121	121	121	121	121	121	121	121	
122	STORAGE	122	122	122	122	122	122	122	122	122	
123	RESTROOM	123	123	123	123	123	123	123	123	123	
124	STAFF	124	124	124	124	124	124	124	124	124	
125	RECEPTION	125	125	125	125	125	125	125	125	125	
126	OFFICE	126	126	126	126	126	126	126	126	126	
127	CONFERENCE	127	127	127	127	127	127	127	127	127	
128	LABORATORY	128	128	128	128	128	128	128	128	128	
129	OPERATING ROOM	129	129	129	129	129	129	129	129	129	
130	ICU	130	130	130	130	130	130	130	130	130	
131	WARD	131	131	131	131	131	131	131	131	131	
132	PHARMACY	132	132	132	132	132	132	132	132	132	
133	RADIOLOGY	133	133	133	133	133	133	133	133	133	
134	STORAGE	134	134	134	134	134	134	134	134	134	
135	RESTROOM	135	135	135	135	135	135	135	135	135	
136	STAFF	136	136	136	136	136	136	136	136	136	
137	RECEPTION	137	137	137	137	137	137	137	137	137	
138	OFFICE	138	138	138	138	138	138	138	138	138	
139	CONFERENCE	139	139	139	139	139	139	139	139	139	
140	LABORATORY	140	140	140	140	140	140	140	140	140	
141	OPERATING ROOM	141	141	141	141	141	141	141	141	141	
142	ICU	142	142	142	142	142	142	142	142	142	
143	WARD	143	143	143	143	143	143	143	143	143	
144	PHARMACY	144	144	144	144	144	144	144	144	144	
145	RADIOLOGY	145	145	145	145	145	145	145	145	145	
146	STORAGE	146	146	146	146	146	146	146	146	146	
147	RESTROOM	147	147	147	147	147	147	147	147	147	
148	STAFF	148	148	148	148	148	148	148	148	148	
149	RECEPTION	149	149	149	149	149	149	149	149	149	
150	OFFICE	150	150	150	150	150	150	150	150	150	

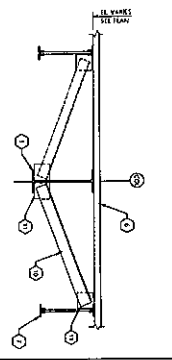
ROOM FINISH SCHEDULE 2ND FLOOR

RM. NO.	NAME	FLOORING MATERIAL	BASE				WALL			CEILING	REMARKS
			NORTH	EAST	SOUTH	WEST	NORTH	EAST	SOUTH		
201	RECEPTION	201	201	201	201	201	201	201	201	201	
202	OFFICE	202	202	202	202	202	202	202	202	202	
203	CONFERENCE	203	203	203	203	203	203	203	203	203	
204	LABORATORY	204	204	204	204	204	204	204	204	204	
205	OPERATING ROOM	205	205	205	205	205	205	205	205	205	
206	ICU	206	206	206	206	206	206	206	206	206	
207	WARD	207	207	207	207	207	207	207	207	207	
208	PHARMACY	208	208	208	208	208	208	208	208	208	
209	RADIOLOGY	209	209	209	209	209	209	209	209	209	
210	STORAGE	210	210	210	210	210	210	210	210	210	
211	RESTROOM	211	211	211	211	211	211	211	211	211	
212	STAFF	212	212	212	212	212	212	212	212	212	
213	RECEPTION	213	213	213	213	213	213	213	213	213	
214	OFFICE	214	214	214	214	214	214	214	214	214	
215	CONFERENCE	215	215	215	215	215	215	215	215	215	
216	LABORATORY	216	216	216	216	216	216	216	216	216	
217	OPERATING ROOM	217	217	217	217	217	217	217	217	217	
218	ICU	218	218	218	218	218	218	218	218	218	
219	WARD	219	219	219	219	219	219	219	219	219	
220	PHARMACY	220	220	220	220	220	220	220	220	220	
221	RADIOLOGY	221	221	221	221	221	221	221	221	221	
222	STORAGE	222	222	222	222	222	222	222	222	222	
223	RESTROOM	223	223	223	223	223	223	223	223	223	
224	STAFF	224	224	224	224	224	224	224	224	224	
225	RECEPTION	225	225	225	225	225	225	225	225	225	
226	OFFICE	226	226	226	226	226	226	226	226	226	
227	CONFERENCE	227	227	227	227	227	227	227	227	227	
228	LABORATORY	228	228	228	228	228	228	228	228	228	
229	OPERATING ROOM	229	229	229	229	229	229	229	229	229	
230	ICU	230	230	230	230	230	230	230	230	230	
231	WARD	231	231	231	231	231	231	231	231	231	
232	PHARMACY	232	232	232	232	232	232	232	232	232	
233	RADIOLOGY	233	233	233	233	233	233	233	233	233	
234	STORAGE	234	234	234	234	234	234	234	234	234	
235	RESTROOM	235	235	235	235	235	235	235	235	235	
236	STAFF	236	236	236	236	236	236	236	236	236	
237	RECEPTION	237	237	237	237	237	237	237	237	237	
238	OFFICE	238	238	238	238	238	238	238	238	238	
239	CONFERENCE	239	239	239	239	239	239	239	239	239	
240	LABORATORY	240	240	240	240	240	240	240	240	240	
241	OPERATING ROOM	241	241	241	241	241	241	241	241	241	
242	ICU	242	242	242	242	242	242	242	242	242	
243	WARD	243	243	243	243	243	243	243	243	243	
244	PHARMACY	244	244	244	244	244	244	244	244	244	
245	RADIOLOGY	245	245	245	245	245	245	245	245	245	
246	STORAGE	246	246	246	246	246	246	246	246	246	
247	RESTROOM	247	247	247	247	247	247	247	247	247	
248	STAFF	248	248	248	248	248	248	248	248	248	
249	RECEPTION	249	249	249	249	249	249	249	249	249	
250	OFFICE	250	250	250	250	250	250	250	250	250	

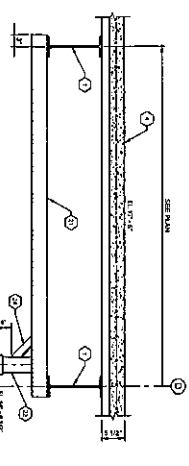
ROOM FINISH LEGEND

101 - GRANITE
 102 - MARBLE
 103 - CERAMIC TILE
 104 - POLISHED CONCRETE
 105 - CARPET
 106 - VINYL
 107 - PAINT
 108 - GYP. BOARD
 109 - GYP. BOARD
 110 - GYP. BOARD
 111 - GYP. BOARD
 112 - GYP. BOARD
 113 - GYP. BOARD
 114 - GYP. BOARD
 115 - GYP. BOARD
 116 - GYP. BOARD
 117 - GYP. BOARD
 118 - GYP. BOARD
 119 - GYP. BOARD
 120 - GYP. BOARD
 121 - GYP. BOARD
 122 - GYP. BOARD
 123 - GYP. BOARD
 124 - GYP. BOARD
 125 - GYP. BOARD
 126 - GYP. BOARD
 127 - GYP. BOARD
 128 - GYP. BOARD
 129 - GYP. BOARD
 130 - GYP. BOARD
 131 - GYP. BOARD
 132 - GYP. BOARD
 133 - GYP. BOARD
 134 - GYP. BOARD
 135 - GYP. BOARD
 136 - GYP. BOARD
 137 - GYP. BOARD
 138 - GYP. BOARD
 139 - GYP. BOARD
 140 - GYP. BOARD
 141 - GYP. BOARD
 142 - GYP. BOARD
 143 - GYP. BOARD
 144 - GYP. BOARD
 145 - GYP. BOARD
 146 - GYP. BOARD
 147 - GYP. BOARD
 148 - GYP. BOARD
 149 - GYP. BOARD
 150 - GYP. BOARD

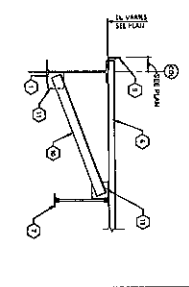




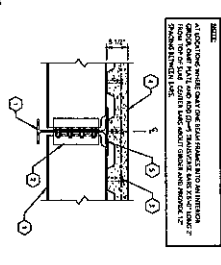
1 Typical Interior Roof Beam At Bracing
1/2" = 1'-0"



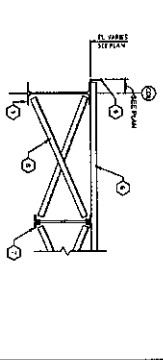
2 Section At Window Head
1/2" = 1'-0"



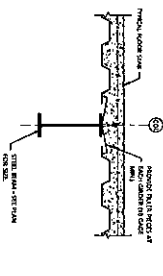
3 Typical Roof Edge Beam At Bracing
1/2" = 1'-0"



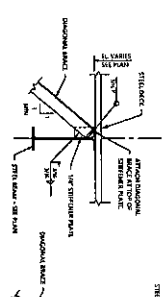
4 Typical Beam To Beam At Floor
1/2" = 1'-0"



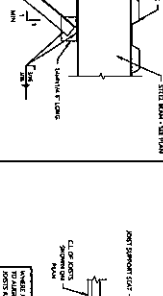
5 Typical Roof Edge Beam At Bridging
1/2" = 1'-0"



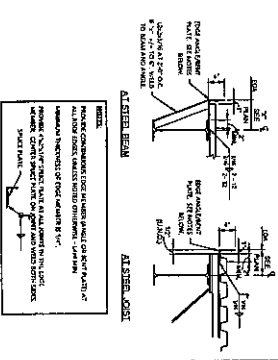
6 Girder Filler Deck Parallel To Beam
1/2" = 1'-0"



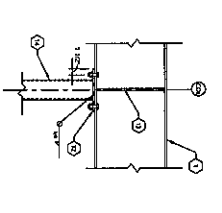
7 Typical Diagonal Brace To Beam
1/2" = 1'-0"



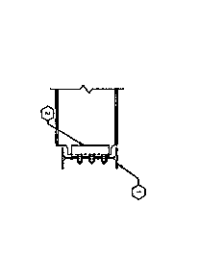
8 Staggered Joist Plan
1/2" = 1'-0"



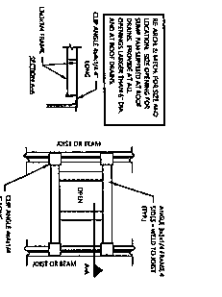
9 Typical Edge Angle/Bent Plate At Roof
1/2" = 1'-0"



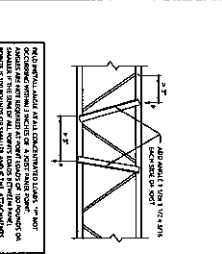
10 Beam Over Column
1/2" = 1'-0"



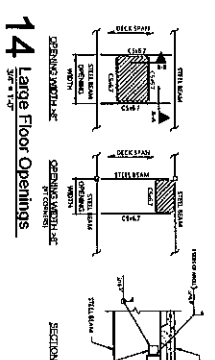
11 Typical Beam To Beam
1/2" = 1'-0"



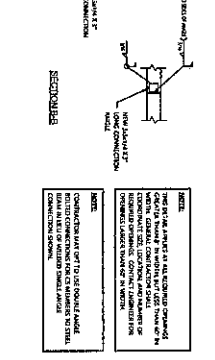
12 Typical Opening Detail At Joist
1/2" = 1'-0"



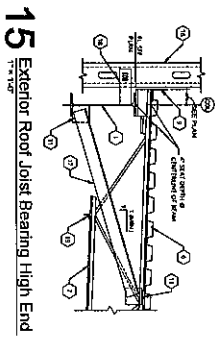
13 Joist Point Load Detail
1/2" = 1'-0"



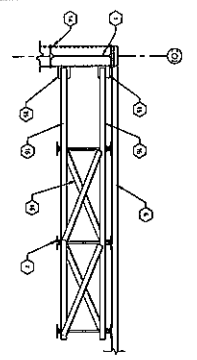
14 Large Floor Openings
1/2" = 1'-0"



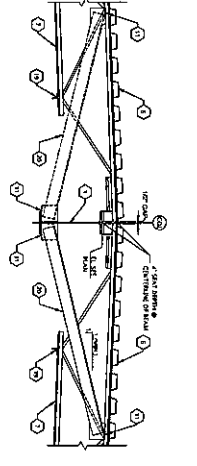
15 Exterior Roof Joist Bearing High End
1/2" = 1'-0"



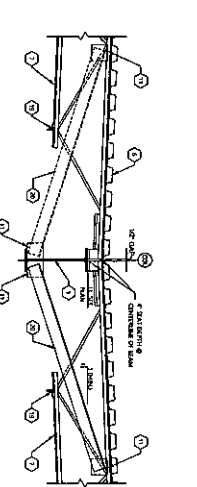
16 Bearing Detail At Stucco Wall
1/2" = 1'-0"



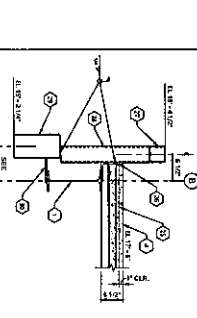
17 Detail At Joist X-Bracing To Column
1/2" = 1'-0"



18 Roof Section At Ridge
1/2" = 1'-0"



19 Roof Section At Valley
1/2" = 1'-0"



20 Section At Spandrel/Rail
1/2" = 1'-0"

NOTE: ALL DIMENSIONS ARE TO FACE UNLESS OTHERWISE NOTED. DIMENSIONS TO FACE ARE TO BE MAINTAINED THROUGHOUT THE PROJECT. DIMENSIONS TO CENTERLINE ARE TO BE MAINTAINED THROUGHOUT THE PROJECT. DIMENSIONS TO CENTERLINE ARE TO BE MAINTAINED THROUGHOUT THE PROJECT. DIMENSIONS TO CENTERLINE ARE TO BE MAINTAINED THROUGHOUT THE PROJECT.

Keynote Legend

1. STEEL BEAM - 181 LBS/FT. SEE 181.
2. STEEL BEAM - 181 LBS/FT. SEE 181.
3. STEEL BEAM - 181 LBS/FT. SEE 181.
4. STEEL BEAM - 181 LBS/FT. SEE 181.
5. STEEL BEAM - 181 LBS/FT. SEE 181.
6. STEEL BEAM - 181 LBS/FT. SEE 181.
7. STEEL BEAM - 181 LBS/FT. SEE 181.
8. STEEL BEAM - 181 LBS/FT. SEE 181.
9. STEEL BEAM - 181 LBS/FT. SEE 181.
10. STEEL BEAM - 181 LBS/FT. SEE 181.
11. STEEL BEAM - 181 LBS/FT. SEE 181.
12. STEEL BEAM - 181 LBS/FT. SEE 181.
13. STEEL BEAM - 181 LBS/FT. SEE 181.
14. STEEL BEAM - 181 LBS/FT. SEE 181.
15. STEEL BEAM - 181 LBS/FT. SEE 181.
16. STEEL BEAM - 181 LBS/FT. SEE 181.
17. STEEL BEAM - 181 LBS/FT. SEE 181.
18. STEEL BEAM - 181 LBS/FT. SEE 181.
19. STEEL BEAM - 181 LBS/FT. SEE 181.
20. STEEL BEAM - 181 LBS/FT. SEE 181.
21. STEEL BEAM - 181 LBS/FT. SEE 181.
22. STEEL BEAM - 181 LBS/FT. SEE 181.
23. STEEL BEAM - 181 LBS/FT. SEE 181.
24. STEEL BEAM - 181 LBS/FT. SEE 181.
25. STEEL BEAM - 181 LBS/FT. SEE 181.
26. STEEL BEAM - 181 LBS/FT. SEE 181.
27. STEEL BEAM - 181 LBS/FT. SEE 181.
28. STEEL BEAM - 181 LBS/FT. SEE 181.
29. STEEL BEAM - 181 LBS/FT. SEE 181.
30. STEEL BEAM - 181 LBS/FT. SEE 181.
31. STEEL BEAM - 181 LBS/FT. SEE 181.
32. STEEL BEAM - 181 LBS/FT. SEE 181.
33. STEEL BEAM - 181 LBS/FT. SEE 181.
34. STEEL BEAM - 181 LBS/FT. SEE 181.
35. STEEL BEAM - 181 LBS/FT. SEE 181.
36. STEEL BEAM - 181 LBS/FT. SEE 181.
37. STEEL BEAM - 181 LBS/FT. SEE 181.
38. STEEL BEAM - 181 LBS/FT. SEE 181.
39. STEEL BEAM - 181 LBS/FT. SEE 181.
40. STEEL BEAM - 181 LBS/FT. SEE 181.
41. STEEL BEAM - 181 LBS/FT. SEE 181.
42. STEEL BEAM - 181 LBS/FT. SEE 181.
43. STEEL BEAM - 181 LBS/FT. SEE 181.
44. STEEL BEAM - 181 LBS/FT. SEE 181.
45. STEEL BEAM - 181 LBS/FT. SEE 181.
46. STEEL BEAM - 181 LBS/FT. SEE 181.
47. STEEL BEAM - 181 LBS/FT. SEE 181.
48. STEEL BEAM - 181 LBS/FT. SEE 181.
49. STEEL BEAM - 181 LBS/FT. SEE 181.
50. STEEL BEAM - 181 LBS/FT. SEE 181.
51. STEEL BEAM - 181 LBS/FT. SEE 181.
52. STEEL BEAM - 181 LBS/FT. SEE 181.
53. STEEL BEAM - 181 LBS/FT. SEE 181.
54. STEEL BEAM - 181 LBS/FT. SEE 181.
55. STEEL BEAM - 181 LBS/FT. SEE 181.
56. STEEL BEAM - 181 LBS/FT. SEE 181.
57. STEEL BEAM - 181 LBS/FT. SEE 181.
58. STEEL BEAM - 181 LBS/FT. SEE 181.
59. STEEL BEAM - 181 LBS/FT. SEE 181.
60. STEEL BEAM - 181 LBS/FT. SEE 181.
61. STEEL BEAM - 181 LBS/FT. SEE 181.
62. STEEL BEAM - 181 LBS/FT. SEE 181.
63. STEEL BEAM - 181 LBS/FT. SEE 181.
64. STEEL BEAM - 181 LBS/FT. SEE 181.
65. STEEL BEAM - 181 LBS/FT. SEE 181.
66. STEEL BEAM - 181 LBS/FT. SEE 181.
67. STEEL BEAM - 181 LBS/FT. SEE 181.
68. STEEL BEAM - 181 LBS/FT. SEE 181.
69. STEEL BEAM - 181 LBS/FT. SEE 181.
70. STEEL BEAM - 181 LBS/FT. SEE 181.
71. STEEL BEAM - 181 LBS/FT. SEE 181.
72. STEEL BEAM - 181 LBS/FT. SEE 181.
73. STEEL BEAM - 181 LBS/FT. SEE 181.
74. STEEL BEAM - 181 LBS/FT. SEE 181.
75. STEEL BEAM - 181 LBS/FT. SEE 181.
76. STEEL BEAM - 181 LBS/FT. SEE 181.
77. STEEL BEAM - 181 LBS/FT. SEE 181.
78. STEEL BEAM - 181 LBS/FT. SEE 181.
79. STEEL BEAM - 181 LBS/FT. SEE 181.
80. STEEL BEAM - 181 LBS/FT. SEE 181.
81. STEEL BEAM - 181 LBS/FT. SEE 181.
82. STEEL BEAM - 181 LBS/FT. SEE 181.
83. STEEL BEAM - 181 LBS/FT. SEE 181.
84. STEEL BEAM - 181 LBS/FT. SEE 181.
85. STEEL BEAM - 181 LBS/FT. SEE 181.
86. STEEL BEAM - 181 LBS/FT. SEE 181.
87. STEEL BEAM - 181 LBS/FT. SEE 181.
88. STEEL BEAM - 181 LBS/FT. SEE 181.
89. STEEL BEAM - 181 LBS/FT. SEE 181.
90. STEEL BEAM - 181 LBS/FT. SEE 181.
91. STEEL BEAM - 181 LBS/FT. SEE 181.
92. STEEL BEAM - 181 LBS/FT. SEE 181.
93. STEEL BEAM - 181 LBS/FT. SEE 181.
94. STEEL BEAM - 181 LBS/FT. SEE 181.
95. STEEL BEAM - 181 LBS/FT. SEE 181.
96. STEEL BEAM - 181 LBS/FT. SEE 181.
97. STEEL BEAM - 181 LBS/FT. SEE 181.
98. STEEL BEAM - 181 LBS/FT. SEE 181.
99. STEEL BEAM - 181 LBS/FT. SEE 181.
100. STEEL BEAM - 181 LBS/FT. SEE 181.

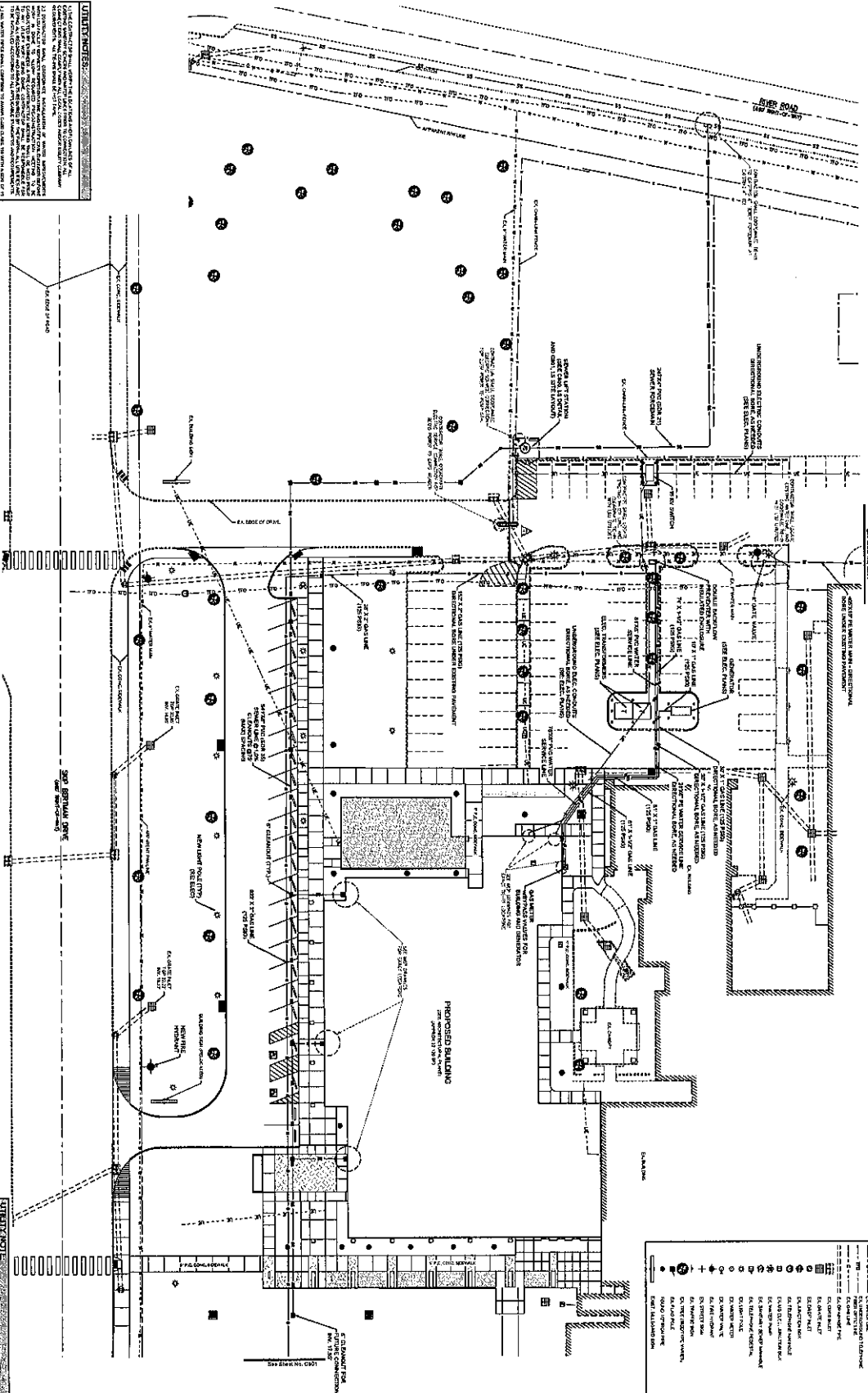
TIPRON
181 LBS/FT. SEE 181

FOX-CHESBIT
181 LBS/FT. SEE 181

STEPHENSON VETERINARY HOSPITAL
5150 Burwood Park
Baton Rouge, LA 70805

PLANNING DETAILS **\$410**





UTILITY NOTES:

1. ALL UTILITIES SHOWN ARE BASED ON RECORD DRAWINGS AND FIELD SURVEY.
2. ALL UTILITIES SHALL BE DEEPENED TO A MINIMUM OF 48\"/>

GENERAL NOTES:

1. ALL UTILITIES SHALL BE INSTALLED IN ACCORDANCE WITH THE LATEST EDITIONS OF THE NATIONAL ELECTRICAL CODE (NEC) AND THE NATIONAL FIRE ALARM AND SIGNAL CODE (NFPA 72).
2. ALL UTILITIES SHALL BE INSTALLED IN ACCORDANCE WITH THE LATEST EDITIONS OF THE NATIONAL PLUMBING CODE (IPC) AND THE NATIONAL GAS CODE (NGC).

GENERAL NOTES:

1. ALL UTILITIES SHALL BE INSTALLED IN ACCORDANCE WITH THE LATEST EDITIONS OF THE NATIONAL ELECTRICAL CODE (NEC) AND THE NATIONAL FIRE ALARM AND SIGNAL CODE (NFPA 72).
2. ALL UTILITIES SHALL BE INSTALLED IN ACCORDANCE WITH THE LATEST EDITIONS OF THE NATIONAL PLUMBING CODE (IPC) AND THE NATIONAL GAS CODE (NGC).

GENERAL NOTES:

1. ALL UTILITIES SHALL BE INSTALLED IN ACCORDANCE WITH THE LATEST EDITIONS OF THE NATIONAL ELECTRICAL CODE (NEC) AND THE NATIONAL FIRE ALARM AND SIGNAL CODE (NFPA 72).
2. ALL UTILITIES SHALL BE INSTALLED IN ACCORDANCE WITH THE LATEST EDITIONS OF THE NATIONAL PLUMBING CODE (IPC) AND THE NATIONAL GAS CODE (NGC).

GENERAL NOTES:

1. ALL UTILITIES SHALL BE INSTALLED IN ACCORDANCE WITH THE LATEST EDITIONS OF THE NATIONAL ELECTRICAL CODE (NEC) AND THE NATIONAL FIRE ALARM AND SIGNAL CODE (NFPA 72).
2. ALL UTILITIES SHALL BE INSTALLED IN ACCORDANCE WITH THE LATEST EDITIONS OF THE NATIONAL PLUMBING CODE (IPC) AND THE NATIONAL GAS CODE (NGC).

LEGEND:

Symbol	Description
Circle with cross	PROPOSED WATER MAIN
Circle with dot	PROPOSED SEWER MAIN
Circle with triangle	PROPOSED GAS MAIN
Circle with square	PROPOSED ELECTRICAL CONDUIT
Circle with diamond	PROPOSED TELEPHONE CONDUIT
Circle with asterisk	PROPOSED CABLE TV CONDUIT
Circle with hash	PROPOSED FIBER OPTIC CONDUIT
Circle with plus	PROPOSED AIR CONDITIONING CONDENSATE
Circle with x	PROPOSED RAINWATER HARVESTING
Circle with dot	PROPOSED FIRE ALARM BELL
Circle with cross	PROPOSED FIRE ALARM BELL
Circle with dot	PROPOSED FIRE ALARM BELL
Circle with triangle	PROPOSED FIRE ALARM BELL
Circle with square	PROPOSED FIRE ALARM BELL
Circle with diamond	PROPOSED FIRE ALARM BELL
Circle with asterisk	PROPOSED FIRE ALARM BELL
Circle with hash	PROPOSED FIRE ALARM BELL
Circle with plus	PROPOSED FIRE ALARM BELL
Circle with x	PROPOSED FIRE ALARM BELL

UTILITY LAYOUT

LOUISIANA 811

CALL BEFORE YOU DIG

1-800-368-8111

STEPHENSON VETERINARY HOSPITAL

3800 Parkway Drive
Shreveport, LA 71206

DATE: 07/16/2019

PROJECT NO: 0500



TIPTON ASSOCIATES

Quality

Professional Engineering and Surveying Services